



# JHARKHAND AS STUDY DESTINATION

Presented by :

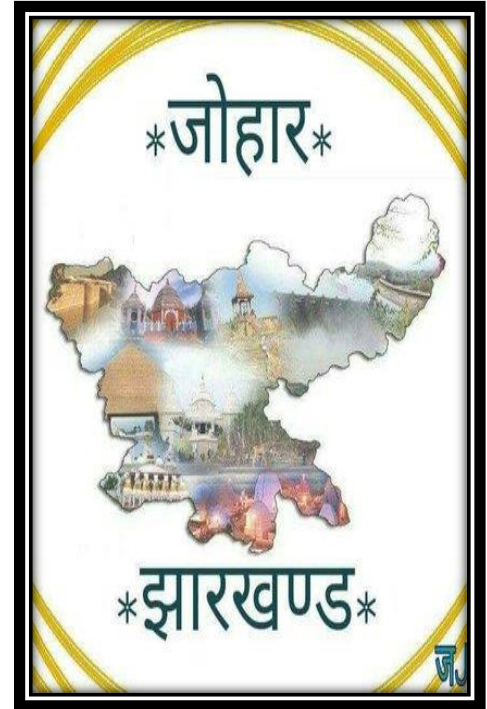
Sayani Nandi (class 10)

Mishti Jain (class 10)

Lavanya Kashyap (class 10)

Under the guidance of Mrs. Paramjit Kaur  
( Principal)

SARALA BIRLA PUBLIC SCHOOL , RANCHI



# INTRODUCTION OF JHARKHAND

- Jharkhand is a state in Eastern India. It's known for its waterfalls, temples, nature, etc.
- It is the 15<sup>th</sup> largest state by area and 14<sup>th</sup> largest by population.
- Hindi is the official language of the state.
- The city of Ranchi is its capital and Dumka is its sub-capital.



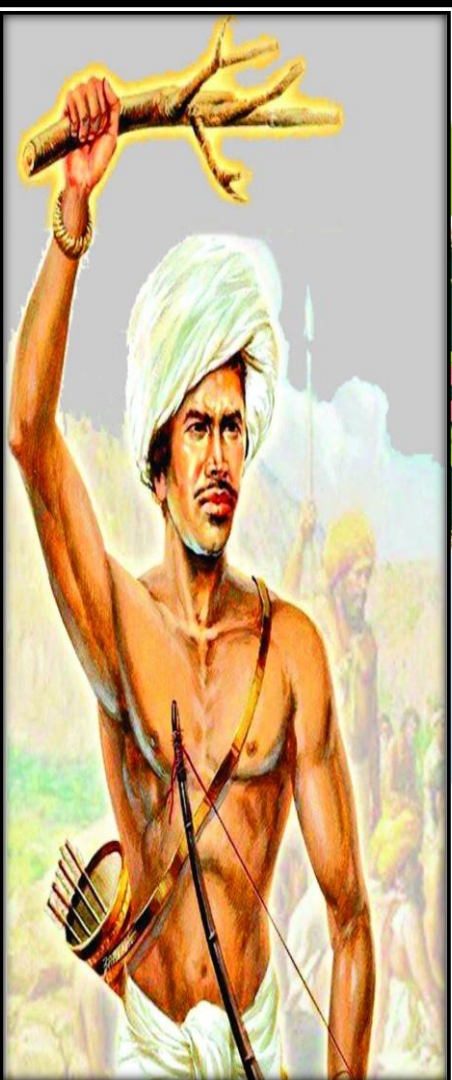
# About Jharkhand

Located in Chotanagpur Plateau region, Jharkhand is immersed in verdant topography.

Jharkhand word literally means 'Land of Jungles' and the people over here live by the maxim of 'Simple living and high thinking'.

Their main festivals 'Karma', 'Sarhul', 'Sohrai' etc. mark their close association with nature.

Let's take you on a guided tour of the land of Bhagwan Birsa Munda.







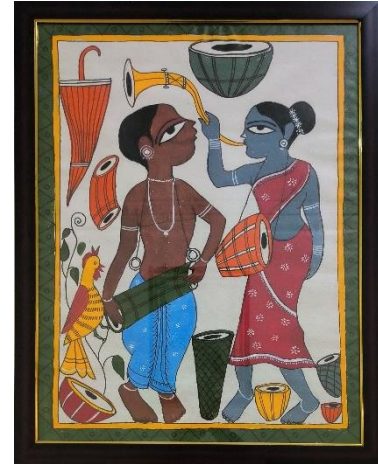
Ranchi, the state capital of **Jharkhand**, is referred to as the ‘City of waterfalls.’





# CLIMATE OF JHARKHAND

- Climate of Jharkhand varies from humid subtropical in the north to tropical wet and dry in the southeast.
- May has the highest temperature ranging from 25-39degree Celsius.
- The states annul rainfall ranges from 1000mm-1500mm in the southwest.





Cost of living in Jharkhand is \$355 which is 1.05 times less expensive than the average in India. In India Jharkhand ranked 17<sup>th</sup> most expensive and 25<sup>th</sup> best state to live in India. The average salary after taxes in Jharkhand is \$353 which is enough to cover living expenses for 1 month.





# About Formation of Jharkhand

Jharkhand, the 28th state of India was **formed on November 15, 2000, after a long-standing tribal movement for statehood.** Jharkhand was earlier a part of Bihar, precisely it was then South Bihar, a highly mineral rich area with a substantial tribal population.





## Government of Jharkhand

- The Government of Jharkhand also known as the State Government of Jharkhand, or locally as State Government, is the supreme governing authority of the Indian state of Jharkhand and its 24 districts. It consists of an executive, led by the Governor of Jharkhand, a judiciary and a legislative branch.
- Like other states of India, the head of state of Jharkhand is the Governor, appointed by the President of India on the advice of the central government. The post of governor is largely ceremonial. The Chief Minister is the head of government and is vested with most of the executive powers. Ranchi is the capital of Jharkhand and houses the Vidhan Sabha (Legislative Assembly) and the secretariat. The Jharkhand High Court, located in Ranchi, has jurisdiction over the whole state.
- The present Legislative Assembly of Jharkhand is unicameral, consisting of 81 Member of the Legislative Assembly (M.L.A). Its term is five years, unless dissolved earlier.



**BIRSA MUNDA AIRPORT**  
The new International Terminal



## Transport used:

The major transport medium of the state of Jharkhand includes- **the roadways, the airways, the waterways, and the railways.** Out of the mentioned modes of transport, the roadways and the railways are the most important and popular modes.

# JHARKHAND AN UPCOMING EDUCATIONAL HUB

## Top Educational Institutes in Jharkhand

- **Sarala Birla University ( SBU) , Ranchi**
- **National Institute of Technology (NIT), Jamshedpur**
- **Birla Institute of Technology (BIT) Sindri**
- **Birsa Agricultural University, Ranchi**
- **National University of Study and Research in Law**
- **Arka Jain University, Jamshedpur**
- **ICFAI University, Ranchi**
- **Sai Nath University, Ranchi**
- **Amity University, Ranchi**
- **St. Xaviers, Ranchi**
- **Indian Institute of Technology (IIT), Dhanbad**
- **Xavier Institute of Social Sciences, Ranchi**
- **Central Institute of Psychiatry (CIP), Ranchi**
- **Cambridge Institute of Technology (CIT), Ranchi**
- **Xavier Labour Relations Institute (XLRI), Jamshedpur**
- **Birla Institute of Technology and Sciences, Mesra**
- **IIM, Ranchi**
- **IIT, Dhanbad**





# ECONOMY OF JHARKHAND

**Jharkhand Economy** growth has been slow in comparison with the national average. The gross domestic product of Jharkhand is estimated at US \$48 billion in 2020-21. Urbanization ratio is 24.1%.

The Economy of Jharkhand depends on mineral resources, industries, agricultural, and tourism sectors.





ELEPHANT



DUSHKA



KOEL



SAL



PALASH

STATE SYMBOLS



## Social Structure :

Jharkhand state has a **combination of a variety of tribes (32) and occupational artisan castes.**

The tribes include two linguistic groups: the Mundari linguistic group including the Santhal, Ho and Munda; and the Dravidian linguistic group- including the Oraon, Chero, and Gond.





The Economy in the state of Jharkhand gets its revenue from the mineral resources sector for the state has a rich storehouse of minerals. The state has almost 40% of the mineral reserves found in India. The various kinds of minerals found in Jharkhand are iron ore, granite, coal, copper, mica, bauxite, and chromite.





# SARALA BIRLA UNIVERSITY , RANCHI





# SBU , RANCHI

- Sarala Birla University is a self-financed private unitary university. The Sarala Birla University Act, 2017 (Jharkhand Act. 13, 2017) has been passed by the Legislative Assembly of Jharkhand in 2017. The Sarala Birla University Act 2017 has been published in the Jharkhand Gazette on 4th July vide the Law Department Notification No. 504 dated 4th July 2017. As per the Act 2017 the Management of the university is carried out by a Board of Governors headed by Smt. Jayashree Mohta, Honorable Chairperson, Bharat Arogya & Gyan Mandir and the first Chancellor of Sarala Birla University.
- The SBU, Ranchi campus is situated amidst the verdant surroundings, stretching over nearly 60 acres of land owned by Bharat Arogya & Gyan Mandir at Birla Campus, Vill - Ara, P.O. – Mahilong, Ranchi-Purulia Highway, Ranchi, Jharkhand, India.

# Sarala Birla University Fees and Eligibility



courses	Total tuition Fees	Eligibility
<a href="#"><u>B.E. / B.Tech</u></a> (6 Courses)	INR 4.08 L - 4.69 L (for 4 years)	<b>10+2</b> : 45 % <b>Exams</b> : <a href="#"><u>JEE Main</u></a> <a href="#"><u>CUET</u></a>
<a href="#"><u>B.Sc.</u></a> (3 Courses)	INR 66 K - 89.1 K (for 3-4 years)	<b>10+2</b> : 45-50 % <b>Exams</b> : <a href="#"><u>CUETCBSE 12th+1</u></a> more
<a href="#"><u>BCA</u></a> (1 Courses)	INR 1.85 L (for 3 years)	<b>10+2</b> : 40 % <b>Exams</b> : <a href="#"><u>CUETCBSE 12th+1</u></a> more
<a href="#"><u>B.Com</u></a> (3 Courses)	INR 89.7 K (for 3 years)	<b>10+2</b> : 40-50 % <b>Exams</b> : <a href="#"><u>CUETCBSE 12th</u></a>
<a href="#"><u>BBA</u></a> (3 Courses)	INR 1.93 L - 3.17 L (for 3-5 years)	<b>10+2</b> : 40 % <b>Exams</b> : <a href="#"><u>CUETCBSE 12th</u></a>
<a href="#"><u>After 10th Diploma</u></a> (5 Courses)	INR 1.09 L - 1.26 L (for 3 years)	<b>Exams</b> : <a href="#"><u>CBSE 10th</u></a> <a href="#"><u>JAC 10th</u></a>
<a href="#"><u>B.A.</u></a> (3 Courses)	INR 43.8 K - 85.8 K (for 3 years)	<b>10+2</b> : 40-50 % <b>Exams</b> : <a href="#"><u>CUETCBSE 12th+1</u></a> more
<a href="#"><u>GNM</u></a> (1 Courses)	-	<b>Exams</b> : <a href="#"><u>CBSE 12th</u></a> <a href="#"><u>JAC 12th</u></a>
<a href="#"><u>MBA/PGDM</u></a> (3 Courses)	INR 3.68 L (for 2 years)	<b>Graduation</b> : 50 %
<a href="#"><u>M.A.</u></a> (4 Courses)	INR 28 K - 40 K (for 2 years)	<b>Graduation</b> : 50 %



# IN SBU , Ranchi Training, Internship and Placement Supported By





# Indian Institute of Management Ranchi

IIM Ranchi was established in Ranchi on 15 December 2009 and began classes on 6 July 2010, under the 11th Five Year Plan.

The institute offers various managements courses like

- Masters in Business Administration (MBA)
- Doctorate in Business Administration
- Management (PhD)
- Post-Doc Fellowship Programme
- 5-year Integrated Programme in Management (IPM BBA+MBA)
- Executive MBA Programmes



# BIRLA INSTITUTE OF TECHNOLOGY, RANCHI



- Birla Institute of Institute is a public deem institute Birla Institute of Institute is a public deem institute in Jharkhand, India.
- It was established in 1955 by BM Birla.
- BIT offers programs in collaboration with Indian institute and industry.
- It includes graduation courses, post-graduation courses, PhD, bachelor in engineering, M.Tech , Master of Engineering, etc.
- BIT has established extension centers in cities within the country and overseas. It provides national as well as international job opportunities.
- in Jharkhand, India.
- It was established in 1955 by BM Birla.
- BIT offers programs in collaboration with Indian institute and industry.
- It includes graduation courses, post-graduation courses, PhD, bachelor in engineering, M.Tech , Master of Engineering, etc.
- BIT has established extension centers in cities within the country and overseas. It provides national as well as international job opportunities.





# Admission Procedure:

## (a) Undergraduate Programs

### Programs

- **Admission criterion**
- **B.Tech. at Mesra Campus**  
(Duration : 4 Years)  
Indian students - Based on AIR in JEE-Main through CSAB (Central Seat Allocation Board) / JoSAA (Joint Seat Allocation Authority)  
NRI/OCI/ SFFS – Based on marks obtained by the candidates in Class 12 / equivalent qualifying examination
- **B.Arch**  
(Duration: 5 Years)  
Same as B.Tech.
- **B.Pharm.**  
(Duration: 4 Years)  
Based on marks / score obtained by the candidates in JEE-Main or NEET-UG  
Merit list is prepared on the basis of 60% weightage to JEE (Main) / NEET-UG Score [total marks obtained] and 40% weightage to marks in Class 12 / equivalent qualifying examination
- **BHMCT**  
(Duration: 4 Years)  
Based on performance of the candidates in Entrance Test and Interview.



# Admission Procedure: Postgraduate Programs

## Programs Admission criterion

- **MBA**  
(Duration: 2 Years)  
Based on CAT /MAT/XAT/CMAT percentile / Scores and GD & PI
- **MCA**  
(Duration: 2 Years)  
Based on performance of the candidates in Online Entrance Test.
- **M.Tech. / MUP**  
(Duration: 2 Years)  
GATE: Based on GATE score and Academic performance  
(80% weightage to GATE score and 20% weightage to Academic Performance).  
Non-GATE: Based on Interview and Academic Performance (20% weightage to Interview and 80% weightage to Academic Performance).
- **M.Pharm.**  
(Duration: 2 Years)  
GPAT: Based on GPAT score and Academic performance  
(80% weightage to GPAT score and 20% weightage to Academic Performance).  
Non-GPAT: Based on Interview and Academic Performance (20% weightage to Interview and 80% weightage to Academic Performance).



# Postgraduate Programs

- **M.Sc.**  
Chemistry  
Mathematics  
Physics  
Biotechnology  
Geo-informatics  
(Duration: 2 Years)  
JAM / CUCET: Based on JAM / CUCET score and Academic Performance  
(80% weightage to JAM / CUCET score and 20% weightage to Academic Performance).  
Non-JAM / CUCET: Based on Interview and Academic Performance  
(20% weightage to Interview and 80% weightage to Academic Performance).
- **Integrated M.Sc.**  
Chemistry  
Food Technology  
Mathematics & Computing  
Physics  
Quantitative Economics & Data Analytics  
(Duration: 5 Years)  
Based on AIR in JEE-Main through CSAB (Central Seat Allocation Board) / JoSAA (Joint Seat Allocation Authority)
- **Ph .D.**  
Based on performance in Entrance Test, Academic Performance and Interview.





## Scholarship Facility:

Students from ST, PT, SC and OBC categories receive scholarship from Welfare Department, Government of Jharkhand every year as per norms of Government of Jharkhand. In order to avail the scholarship, students should meet the eligibility criteria as notified by Welfare Department, Government of Jharkhand.



# Placement

BIT Mesra has an active placement cell that conducts placement drives every year. This institute has recently started its 2022 placement drive. Till now, the participating batch received 126 placement offers. The highest salary stood at INR 32.50 LPA. & average salary stood at INR 9.61 LPA. 36 recruiters has actively participated placement drive. Major recruiters included Harshed In, Persistent Systems, Cognizant, Daffodil Software ,etc .



# IIT, Dhanbad



- It is a public tech. university.
- It was established in 1926.
- It has 18 academic departments covering engineering, applied sciences, humanities and social sciences and management programs.
- Various courses offered by institute includes B.Tech, M.Tech , M.Sc., MBA, PhD, PDFs.
- It was ranked 14 by Outlook, India in 2019.





# KEY HIGHLIGHTS OF IIT DHANBAD

- **Placement %age- UG for cricuitan branches- 97.96%**
- **- UG for core branches- 96.18%**
- **- PG for all science branches-71.21%**
- **- MBA- 91.24%**
- **Highest package(domestic)- INR 50 LPA**
- **Highest package (international)- INR 103 LPA**
- **Average package- INR 17.3 LPA**
- **No. of students with greater than 30 LPA – 162**
- **No. of students between 10 to 30 LPA – 597**
- **No. of students between 5 to 10 LPA – 313**
- **Total students Placed -1072**



# ADMISSION PROCEDURE

- B.Tech / M.Tech
- Admission to the B.Tech courses done through the JEE advances entrance exam followed by counselling.
- Category A- both degree are in the same department.
- Category B- This is a two department program where the bachelor's degree is in the parent department and the master's degree is in other department.
- Category C- Bachelor's degree is in the parent department and master's degree in MBA.
- Another option is a UG degree in double major.



## Ph.D

- Students need to qualify for either GATE or UGC NET entrance exam. Admission process is based on the interview round to qualify the selection process.
- Eligibility- graduate with min. 70% aggregate or 7.0 CGPA. Postgraduate with 60% aggregate or 6.0 CGPA.





# COURSES OFFERED

B.tech.

The institute offer 13 varieties of B.tech. courses in different disciplines of mining, chemical, civil, computer science, electronics, communication, instrumentation, mechanical, mineral, mining machinery, environmental.



## MTech

The institute offers MTech courses in 29 branches. Main branches are mining, machinery, environment science, mineral exploration, open cast mining, mining engineering, geomatics, underground space tech., computer science, etc.



**PhD.**

It offers a great atmosphere for scholars for research activities. Research opportunities are available in 18 departments.

Admission to PhD is done through NET/JRF/Internal exams.





# COURSE FEES

## ELIGIBILITY

- [B.Tech](#)
  - ₹2.22 Lakhs (1st Year Fees)
  - 10+2 + JEE Advanced
  
  - [M.Sc](#)
  - ₹54,300 (1st Year Fees)
  - Graduation with 55% + IIT JAM
  
  - [M.Tech](#)
  - ₹93,570 (1st Year Fees)
  - Graduation + GATE
  
  - [Ph.D](#)
  - ₹60,800 (1st Year Fees)
  - Post Graduation
- [MBA](#)
  - ₹3.22 Lakhs (1st Year Fees)
  - Graduation with 50% + CAT
  
  - [B.Tech + M.Tech](#)
  - ₹2.22 Lakhs (1st Year Fees)
  - 10+2 with 75% + JEE Advanced
  
  - [B.E](#)
  - ₹2.22 Lakhs (1st Year Fees)
  - 10+2 + JEE Advanced



# Placement

IIT Dhanbad placements 2022 observed the highest package of INR 50 LPA, whereas the average package stood at INR 17.3 LPA. The average package offered to BTech students stood at INR 26.46 LPA. Further, over 300 recruiters participated in the placement process and presented 1,191 offers to the students. The top recruiters of IIT Dhanbad in 2022 included Barclays, Morgan Stanley, Cognizant, Hitachi, Xiaomi, etc.



## **VINOBA BHAVE UNIVERSITY , HAZARIBAGH**

- The university offers courses at the undergraduate and post graduate levels, manages and maintains 12 constituent colleges, 61 affiliated colleges are also imparting teaching up to undergraduate level in physical, life, earth, social sciences, humanities, commerce, technology, medical science and in law, education, homeopathy and ayurvedic medicines.
- The university was established on 17<sup>th</sup> Sep,1992.





# Vocational courses

- **UG level:**

MBBS (5 yrs.)

BBA (3 yrs.)

BCA (3 yrs.)

B.Ed./Integrated B.Ed.

B.Tech.

Bachelor of Computer Science (BCS)

Bachelor of Physiotherapy (BPT)

Bachelor of Ayurvedic Medicine and Surgery (BAMS)

Bachelor of Homeopathic Medicine and Surgery (BHMS)

Bachelor in Medical Laboratory Technology (BMLT) (3 yrs.)

Bachelor of Library and Information Science (B.LIS.)

Bachelor of Laws (LLB)

Bachelor of Arts-Bachelor of Legislative law (BA.LLB.)(5 yrs.)

Bachelor of Fashion Design (FD)

Clinical Nutrition and Dietetics (CND)

Journalism Mass Communication (JMC)

BIOTECH



# Vocational courses

- **PG Level (2 yrs.)**
  - MBA (Regular)
  - MBA (Evening)
  - MCA
  - M.Ed.
  - M.Sc.(Clinical nutrition & Dietetics/Biotechnology)
  - Master of Library and Information studies (M.LIS)
  - Master of Dental Surgery (MDS)/
  - PG Ayurveda



# Scholarships

**Vinoba Bhave University accepts various government scholarships such as**

**Rajiv Gandhi National Fellowship (JRF & SRF)**

**Maulana Azad Gandhi National Fellowship for Minority**

**UGC – NET (JRF & SRF)**

**Merit Scholarship (Rank holder)**

**Merit – Cum – Means Based Scholarship for Minority Community (M.A/M.Sc/M.com), Jharkhand e-Kalyan**





# Admission Criteria:

- For admission to courses offered by VINOBA BHAVE University (VBU), students have to qualify the national/state level entrance tests to secure admission in various UG & PG programs in different specializations.
- Admission to MBA is given on the basis of past academic performance, marks in **CAT/MAT/CMAT/XAT/ATMA** followed by GD and PI.
- For B.Tech and M.Tech, candidates should possess valid **JEE Main** and **GATE** score, respectively.
- In case of MBBS and BDS, **NEET** score is considered for admission.
- **JCECE** scores are mandatory for admission to MCA program.



# PLACEMENT

- According to the NIRF report 2021 released, VBU has concluded its 2020 placements with over 109 students placed from UG (4yrs) programs. Further, the median package offered to the UG students in the academic yr 2019-20 was INR 2LPA.
- The placement %age of UG programs rose by 31% in 2020 when compared with 2019.They got placed –
- Ethereal corporate network pvt. ltd
- Halxton technology pvt. ltd
- Huigin eletronic, India pvt. ltd
- Markytics, Mumbai
- SGRS academic pvt ltd, Tatisilway, Ranchi,etc
- In the year 2022 Students of Vinoba Bhave University, Hazaribagh got direct campus placements in top companies like HDFC Bank, Airtel, ICICI Securities, Mahindra & Mahindra, TATA MOTORS and more.



## XLRI, JAMSHEDPUR



XLRI is the topmost management college of the country. It is a dream for almost every MBA aspirant to get an admission in this college.

**XAT** is the entrance exam that needs to be cracked to get an admission here. The college has 25 International Partners for students exchange programs in countries like Australia, US, Sweden, Spain, UK, Germany, Poland, Belgium, and many others.

XLRI offers courses like **PGDM (BM)**, **PGDM (HRM)**, **FPM**, **Executive FPM**, **Executive PGDM**, and few short-term courses.





# BIT, Sindri:



BIT Sindri is another top 15 colleges in Jharkhand. So, Jharkhand has two renowned BITs of the country.

This college got established in 1949.

It is a public college. BIT Sindri is approved by AICTE & is affiliated to Vinoba Bhave University.

The college offers courses like B.Tech, M.Tech & Ph.D. The admissions in all these streams are through the entrance examinations.



# XISS



- XISS is another Xavier institute in Jharkhand. The college was established in 1955. The Society of Jesus popularly called “Jesuits” are the one who manage this college. The college offers PGDM courses in 5 disciplines. The 5 disciplines are HRM, Operation Management, FM, Rural Management, Marketing, and Information Technology. The college is affiliated to AICTE.
- The accepted exams are CAT/XAT/CMAT. The eligibility criteria of the students is bachelor’s degree with a minimum of 50% marks. The entrance test is followed by a group discussion and personal interview conducted by XISS themselves.
- Their highest placement package is 26.4 LPA and average package is 7.8 LPA. Vodafone, Tata Steel, TCS, BOI, HCL, IDBI Bank, etc are some of the top companies visiting the campus.



# AMITY UNIVERSITY

- One of the most famous colleges of Ranchi is Amity University. This one is a private university. Since years, **Amity Ranchi is in the list of top 50 colleges of NIRF**. Also, Amity Ranchi is in our list of top 15 colleges in Jharkhand. The college got established in 2016. The college offers UG and PG level courses.
- The courses offered by **BBA, MBA, B.Tech, BCA, B.com, BAJMC, BA (hons)**, and few more. The Amity Education Group has set up this college and it is approved by UGC. There are **11 UG courses offered and 3 PG courses**. **Management, engineering, arts, law, mass communication, and commerce** are the streams of courses offered in Amity Ranchi.
- The admission in this college is through the entrance exams scores. The accepted entrance exams are **CAT/ XAT/ MAT/ CMAT/JEE Mains/AMITY JEE**. The college is famous for modern day facilities for the students along with the technical exposure.
- The highest placement package offered to the students till date is **10 LPA, average package is 7 LPA, and the lowest CTC is 3.5 LPA**. The top companies to have recruited students from the campus are **Byjus, Amazon, TCS, Wipro, and others**.





Sadri/Nagpuri and Khortha are the two largest regional languages spoken in Jharkhand, followed by Kurmali and Panchparganiya. Along with a few other languages, these four languages have been granted the status of second official state languages of Jharkhand





## FOODS AND BEVERAGES

A traditional Jharkhand lavish meal would primarily consist of dal, khoa, pitthas, dhuska, chilka, bamboo shoots, rugra, malpua, etc. Typical beverages consists of chai, coffee, handia etc. Jharkhand is the land of mouth-watering delicacies with its variety of pickles.





THANK YOU