

SARALA BIRLA PUBLIC SCHOOL

Birla Knowledge City, Mahilong, Ranchi

Session - 2021-22

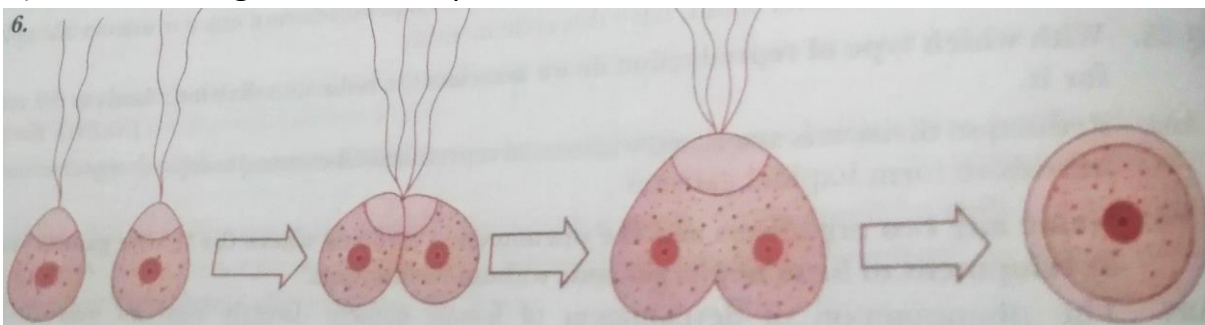
Assignment - I



Class: XII

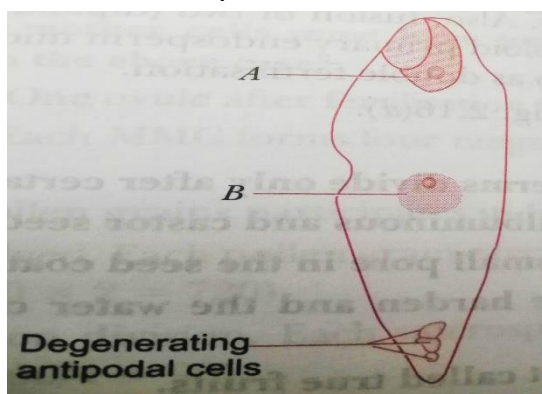
Subject: Biology

- 1) Is Marchantia monoecious or dioecious? Where are the sex organs borne in this plant?
- 2) I) State the type of gametes shown in the diagram.
II) Identify the process taking place and the resultant structure.
III) Name an organism that reproduces in this manner?

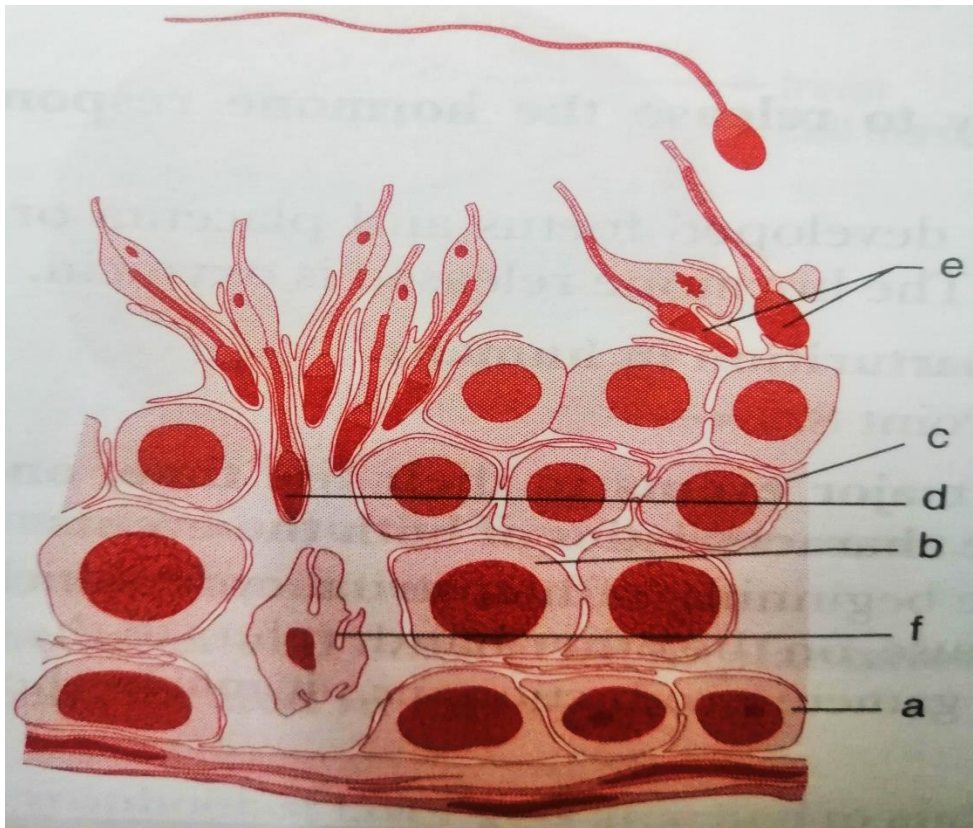


- 3) Give reason:
 - I) A liverwort plant is unable to complete its life cycle in a dry environment.
 - II) Number of male gametes produced is much more than the female gametes produced.
 - III) Organisms exhibiting external fertilization show great synchrony between the sexes and release a large number of gametes into surrounding medium.
- 4) Draw a diagram of pollen grain with germ tube and two male gametes.
- 5) Differentiate between perisperm and endosperm by giving one example of each.
- 6) A) Name the structures which the parts 'A' and 'B' shown in the diagram below respectively develop into.
B) Explain the process of development which 'B' undergoes in albuminous and exalbuminous seeds.

Give one example of each of these seeds.



- 7) In our society the women are often blamed for giving birth to daughters. Can you explain why this is not correct?
- 8) Study the figure given below and answer the following questions:
- I) Pick out and name the cells that undergo spermiogenesis.
 - II) Name 'a' and 'b' cells. What is the difference between them with reference to the number of chromosomes?
 - III) Pick out and name the motile cells.
 - IV) What is 'f' cell? Mention it's function.
 - V) Name the structure of which the given diagram is a part.



□□□